

CERTIFICATE OF LOCATION OF GOVERNMENT CORNER

NORTHEAST Corner of Section 1, Township 106, Range 39, 5TH P.M.

STATE OF MINNESOTA, County of MURRAY

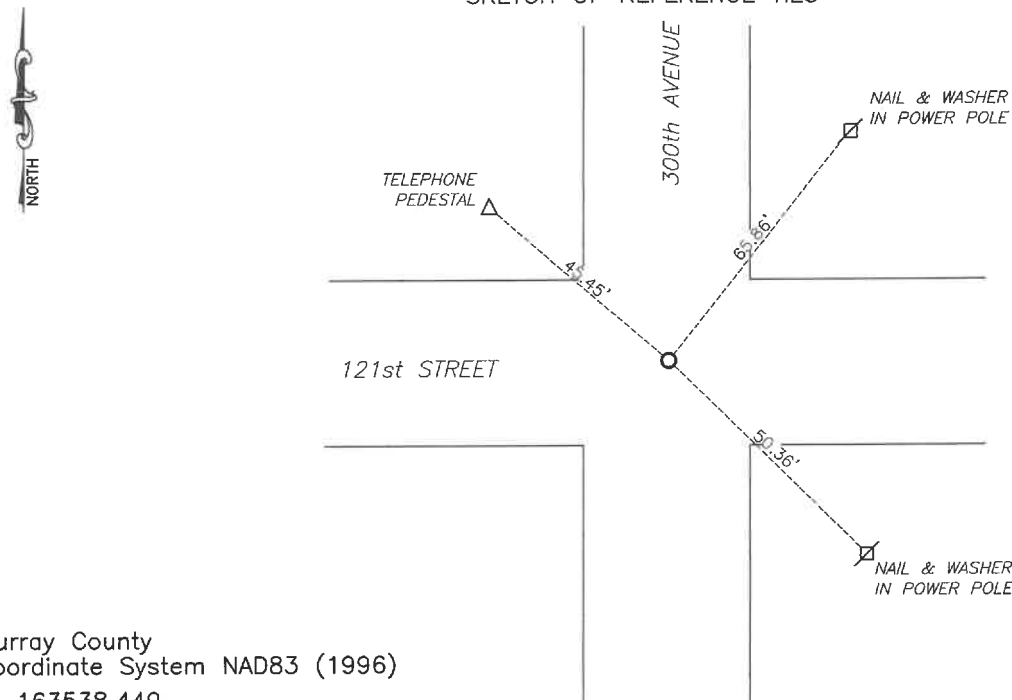
At the corner location shown on the sketch:

☒ On July 22, 2024 found a Large pointed field stone with a concrete tile on the west side.
DATE

☒ left monument as found, ☐ lowered monument, ☐ removed monument (explain)

☐ On _____ placed a _____
DATE

SKETCH OF REFERENCE TIES



Murray County
Coordinate System NAD83 (1996)

N: 163538.449
E: 580045.402

WGS84
LAT: 44°01'18.9711"
LON: -95°27'44.5913"

Statement of evidence relative to this corner location is on back of page.

I hereby certify that this document and the data contained herein was prepared by me or under my direct supervision.

Daniel L. Bueltel
License No. 43844

3/12/2025
DATE

MAR 13 2025

MURRAY COUNTY RECORDER

Statement of Evidence

NORTHEAST CORNER SECTION 1, T106N, R39W OF THE 5th P.M.

In September 1858, W.J. Neely surveyed the east township line.

In July of 1861, J.W. Myers surveyed the north, south, and west township lines.

In August of 1861, Wellman & Smoot subdivided the township.

1898, C.W. Garr used the corner for survey in Sec. 6-106-38 (Cottonwood County). Noted it was a stone.

On June 28, 2024 Buelte!- Moseng searched the intersection and found a 4" spike in the center of intersection. Went back on July 22, 2024 and dug with a backhoe in the center of the intersection and found a large pointed field stone 0.5'± below the road surface with a piece of concrete tile on the west side of the stone and pieces of wood around it. Placed a 5/8" x 10" iron rod on the north side of the stone for locating purposes.